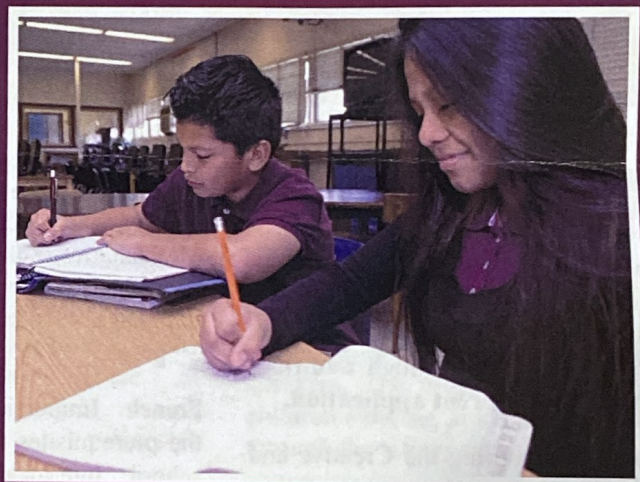
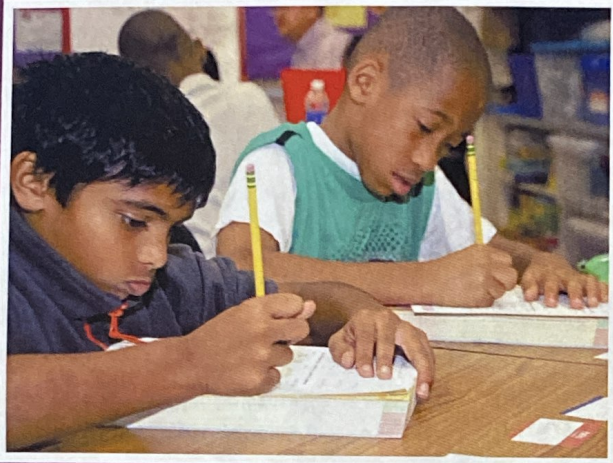


Prince George's County Board of Education | Prince George's County Public Schools

## SPECIALTY PROGRAM SCHOOLS



## LOTTERY BROCHURE

Creative & Performing Arts | French Immersion | Montessori | Spanish Immersion / Dual Language | Talented and Gifted



Prince George's County Public Schools | Department of Pupil Accounting  
14201 School Lane, Room 211 | Upper Marlboro, MD 20772 | 301-952-6300

# Specialty Programs

*Seats are limited in all programs and school sites.  
Submission of an application is not a guarantee of placement.*

## CREATIVE AND PERFORMING ARTS

The Creative and Performing Arts program is designed to develop the interests and talents of students in the arts and enhance the academic discipline through an interdisciplinary approach stressing creativity, artistic expression and culture.

The enhanced disciplinary academic program encourages creative and artistic expression, as well as self-discipline, focus and critical thinking skills.

Experiences and training are designed to challenge, develop artistic skills and 21<sup>st</sup> century skills for all students, as well as to provide exceptional opportunities for the artistically-talented child.

**NOTE:** Kindergarten through 5<sup>th</sup> grade students enter by the **lottery** process. Students in 6<sup>th</sup> – 8<sup>th</sup> grades enter the program through **audition, requiring a different application.**

Questions regarding the Creative and Performing Arts Program **audition process and application** should be directed to the Creative Arts Programs Office at 301-808-8317.

## FRENCH IMMERSION

The French Immersion Program is a full immersion model where all academic subjects are taught in the French language in Kindergarten – 8<sup>th</sup> grade. The 9<sup>th</sup> – 12<sup>th</sup> continuation is at Central High School.



French-speaking teachers immerse students completely in French as they learn the Prince George's County Public Schools curriculum in Mathematics, Science, Social Studies and Language Arts. English Reading/Language Arts instruction begins in 2<sup>nd</sup> grade.

French Immersion students meet the prerequisites to apply to the high school International Baccalaureate Program.

**NOTE:** Lottery admission is limited to students entering Kindergarten only. Students must be 5 years of age by September 1 to enter Kindergarten.

Questions regarding curriculum and instruction in the French Immersion program should be directed to the Immersion Programs Office at 240-455-5899. Students entering upper grades that are interested in available seats should contact

the Immersion Programs Office at 240-455-5899 before May 15.

## MONTESSORI

Montessori schools provide an interdisciplinary, discovery-based approach to learning presented in multi-age learning environments designed to meet the needs of the child at each stage of development.

Primary students, ages 3 to 6, are guided in developing coordination, concentration, a sense of order and independence.

Elementary students, ages 6 to 12, learn through interdisciplinary, hands-on activities.

Middle school students pursue rigorous studies in all core courses and experiences designed to help them delve into the interconnections of ideas and events.

# Specialty Programs (cont.)

**NOTE:** Entry is limited to preschool students who will be age 3 or 4 by September 1. Students in Kindergarten – 8<sup>th</sup> grade may apply only if they are currently enrolled in a full-day AMA/AMI affiliated Montessori school.

Preschool students do not begin the first day of school, but are gradually introduced to the program during the first few weeks. New 4-year-old students attend half-days for the first two weeks of school and are contacted by the teacher for their special induction day.

The 3-year-old program is a half-day program; no transportation is provided. Four-year-olds who demonstrate the requisite maturity attend the full-day program. Transportation is provided for the 4-year-old program.

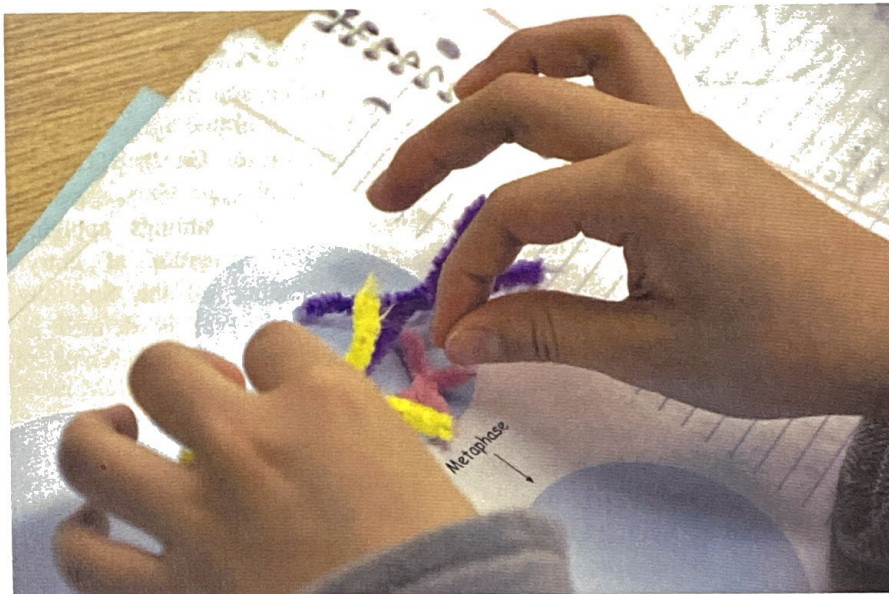
Students are accepted on a probationary status for the first eight weeks, beginning with the day they become active participants in the class.

Questions regarding the Montessori program should be directed to 301-808-8240.

## **SPANISH IMMERSION**

Language Immersion is an educational approach in which students are taught the curriculum content through the medium of a second language, Spanish. Children learn their entire core subjects (Reading, Writing, Mathematics, Social Studies, and Science) in Spanish.

Spanish speaking teachers immerse student completely in Spanish as they learn the Prince George's County Public School's curriculum. In this way, immersion students not only learn the content, but also gain knowledge of the language in which it is taught.



**NOTE:** Lottery admission is limited to students entering Kindergarten. Students must be 5 years of age by September 1 to enter Kindergarten.

Students entering upper grades that are interested in available seats should contact the Immersion Programs Office at 240-455-5899 before May 15.

## **SPANISH DUAL LANGUAGE**

Dual Language Education is also known as Two Way Immersion. The Spanish Dual Language Program gives equal emphasis to English and non-English language speakers. Students learn Spanish and English through content based instruction in selected core subjects with a cross cultural understanding for both native and non-native speakers. Students read, write, listen and speak in both languages, becoming bilingual, biliterate and bicultural.

The benefits of bilingualism are numerous, including greater flexibility in thinking, high rates of academic achievement, and cross-cultural learning and communication. Students will be prepared to compete within the context of the Global Society. The model limits 50% of its seats to native speakers. The program is offered to children entering in kindergarten only through the lottery process.

**NOTE:** Lottery admission is limited to students entering Kindergarten. Students must be 5 years of age by September 1 to enter Kindergarten.

Students entering upper grades that are interested in available seats should contact the Immersion Programs Office at 240-455-5899 before May 15.

Questions regarding curriculum and instruction in the Spanish Immersion/ Dual Language program should be directed to the Immersion Programs Office at 240-455-5899.

# Specialty Programs (cont.)

## **TALENTED AND GIFTED**

The Talented and Gifted (TAG) Center Program provides TAG-identified students with full-day advanced, enriched, accelerated educational experiences to meet the unique and specialized instructional, social and emotional needs of gifted learners. At this time, PGCPS has 7 elementary TAG Centers and 5 middle school TAG Centers.

NOTE: Students must be TAG-identified in order to participate in the program. If your child is not yet identified as TAG, but is in the process of being screened, you may select TAG on your application. Students must be identified and coded TAG before lottery placement occurs.

For more program information, visit the TAG Programs website at [www.pgcps.org/tag](http://www.pgcps.org/tag). Contact the Office of Advanced Enriched Instruction at 301-808-3790.

## **SIBLING APPLICATION AVAILABILITY**

For continuing students who gained entry to a Specialty Program through the lottery, Prince George's County Public Schools provides special consideration for siblings applying to the same program at entry-level. Depending on the Specialty Program, entry-level is defined as Pre-Kindergarten, Kindergarten or 2<sup>nd</sup> grade.

Early entry options do not apply to Specialty placements. If parents have children other than entry-level that wish to participate in the Specialty, they must apply through the regular lottery application process.

Siblings who are currently participating in a Specialty Program are not eligible for a sibling placement preference and any acceptance removes options for future sibling placements.

A sibling is a brother or sister by blood, marriage or adoption living in the same household. Friends, cousins or two separate families living under the same roof do not qualify as siblings. The older sibling must continue attending the same Specialty Program for the next school year.

A Specialty Program student who is currently in the 5<sup>th</sup> or 8<sup>th</sup> grade in the current school year cannot bring a sibling, with the exception of 5<sup>th</sup> grade students enrolled in a K-8 school.

Parents should be aware that application is being made to the program and the school assignment is dependent on the residential address.

There may be an opportunity to attend a program location out of the attendance area if seats in the desired location are still available after all eligible, in-boundary applicants have been considered.

The program location for a given address may change as additional schools are added to the program or program boundaries are re-aligned.

## **OTHER SPECIAL PROGRAMS**

The following programs require separate applications not related to the lottery placement process and a separate application is required to the program school.

- Center for the Visual and Performing Arts at Suitland and Northwestern High Schools.
- International Baccalaureate Program
- Creative and Performing Arts:
  - Benjamin Foulois, Grades 6-8
  - Hyattsville Middle School, Grades 7-8
  - Thomas Pullen, Grades 6-8

Applications are located online at [www.pgcps.org](http://www.pgcps.org).

# Directory

## DEPARTMENT OF PUPIL ACCOUNTING

14201 School Lane, Room 211, Upper Marlboro, MD 20772..... 301-952-6300

## CREATIVE AND PERFORMING ARTS

**Creative Arts Programs** ..... 301-808-8317  
Benjamin Foulois Academy, 4601 Beauford Road, Suitland, MD 20746 ..... 301-817-0300  
Hyattsville Middle School, 6001 42<sup>nd</sup> Avenue, Hyattsville, MD 20781..... 301-209-5830  
Thomas G. Pullen Academy, 700 Brightseat Road, Landover, MD 20786..... 301-808-8160

## FRENCH IMMERSION

**Immersion Programs** ..... 301-808-5956  
Dora Kennedy French Immersion, 8950 Edmonston Road, Greenbelt, MD 20770 ..... 301-918-8660  
Largo High School, 505 Largo Road, Upper Marlboro, MD 20772 ..... 301-808-8880  
Maya Angelou French Immersion, 2000 Calloway Street, Temple Hills, MD 20748 ..... 301-702-3950

## SPANISH IMMERSION / DUAL LANGUAGE

**Immersion Programs** ..... 301-808-5956  
Cesar Chavez Elementary School, 6609 Riggs Road, Hyattsville, MD 20782..... 301-853-5694  
Kettering Middle School, 65 Herrington Drive, Upper Marlboro, MD 20774 ..... 301-808-4060  
Largo High School, 505 Largo Road, Upper Marlboro, MD 20772 ..... 301-808-8880  
Overlook Elementary School, 3298 Curtis Drive, Temple Hills, MD 20748 ..... 301-702-3831  
Phyllis E. Williams Elementary School, 9601 Prince Place, Upper Marlboro, MD 20772 ..... 301-499-3373

## MONTESSORI

**Montessori** ..... 301-808-8240  
John Hanson Montessori, 6360 Oxon Hill Road, Oxon Hill, MD 20745 ..... 301-749-4052  
Judith Hoyer Montessori, 929 Hill Road, Landover, MD 20786..... 301-808-4421  
Robert Goddard Montessori, 9850 Good Luck Road, Seabrook, MD 20706..... 301-918-3515

## TALENTED AND GIFTED

**TAG Programs** ..... 301-808-3790  
Accokeek Academy, 14600 Berry Road, Accokeek, MD 20607 ..... 301-203-1140  
Benjamin Tasker Middle School, 4901 Collington Road, Bowie, MD 20715..... 301-805-2660  
Capitol Heights Elementary School, 601 Suffolk Avenue, Capitol Heights, MD 20743..... 301-817-0494  
Glenarden Woods Elementary School, 7801 Glenarden Parkway, Glenarden, MD 20706 ..... 301-925-1300  
Greenbelt Middle School, 6301 Breezewood Road, Greenbelt, MD 20770..... 301-513-5040  
Heather Hills Elementary School, 12605 Heming Lane, Bowie, MD 20716 ..... 301-805-2730  
Kenmoor Middle School, 2500 Kenmoor Drive, Landover, MD 20785 ..... 301-925-2300  
Longfields Elementary School, 3300 Newkirk Avenue, Foresville, MD 20747 ..... 301-817-0455  
Mattaponi Elementary School, 11701 Duley Station Road, Upper Marlboro, MD 20772 ..... 301-599-2442  
Valley View Elementary School, 5500 Danby Avenue, Oxon Hill, MD 20745..... 301-749-4350  
Walker Mill Middle School, 800 Karen Boulevard, Capitol Heights, MD 20743..... 301-808-4055